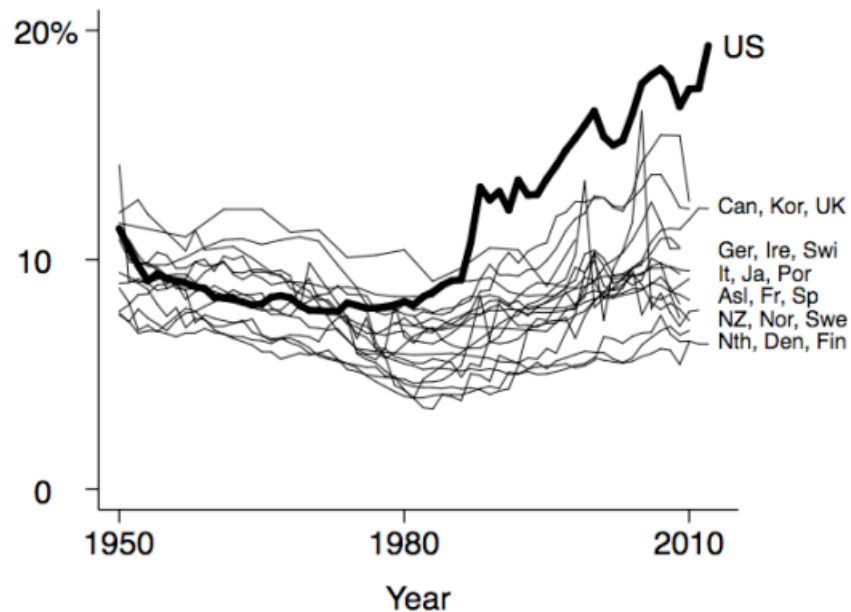


## Stata sample commands

Lane Kenworthy, "Income and wealth inequality," *The Good Society*, figure 3

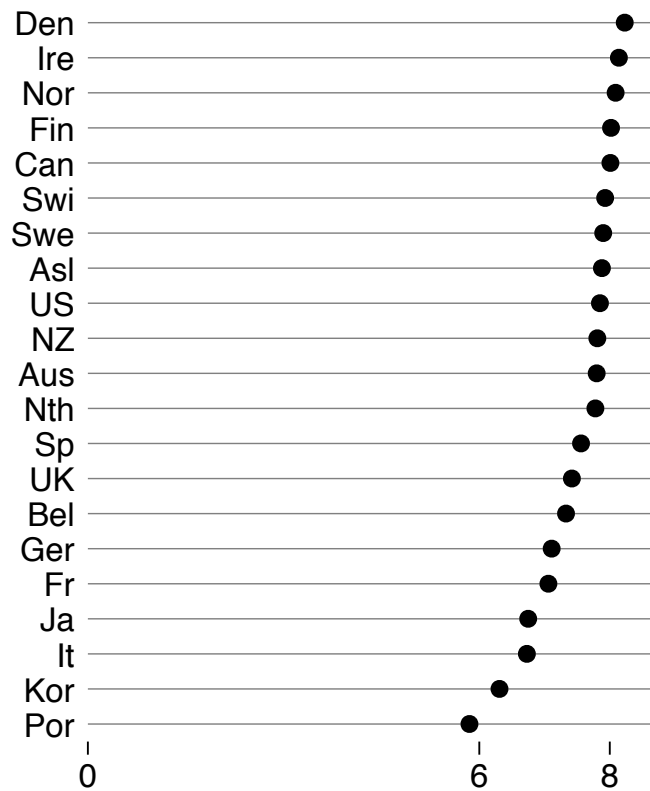


```
scatter toplpctshare year if year>=1950 & year<=2013 &
country=="Australia", msymbol(i) msize(*1) mcolor(black)
connect(direct) clpattern(solid) clwidth(vthin) clcolor(black) ||
scatter toplpctshare year if year>=1950 & year<=2013 &
country=="Austria", msymbol(i) msize(*1) mcolor(black)
connect(direct) clpattern(solid) clwidth(vthin) clcolor(black) ||
scatter toplpctshare year if year>=1950 & year<=2013 &
country=="Belgium", msymbol(i) msize(*1) mcolor(black)
connect(direct) clpattern(solid) clwidth(vthin) clcolor(black) ||
scatter toplpctshare year if year>=1950 & year<=2013 &
country=="Canada", msymbol(i) msize(*1) mcolor(black)
connect(direct) clpattern(solid) clwidth(vthin) clcolor(black) ||
scatter toplpctshare year if year>=1950 & year<=2013 &
country=="Denmark", msymbol(i) msize(*1) mcolor(black)
connect(direct) clpattern(solid) clwidth(vthin) clcolor(black) ||
scatter toplpctshare year if year>=1950 & year<=2013 &
country=="Finland", msymbol(i) msize(*1) mcolor(black)
connect(direct) clpattern(solid) clwidth(vthin) clcolor(black) ||
scatter toplpctshare year if year>=1950 & year<=2013 &
country=="France", msymbol(i) msize(*1) mcolor(black)
connect(direct) clpattern(solid) clwidth(vthin) clcolor(black) ||
scatter toplpctshare year if year>=1950 & year<=2013 &
```

```
country=="Germany", msymbol(i) msize(*1) mcolor(black)
connect(direct) clpattern(solid) clwidth(vthin) clcolor(black) ||
scatter toplpctshare year if year>=1950 & year<=2013 &
country=="Ireland", msymbol(i) msize(*1) mcolor(black)
connect(direct) clpattern(solid) clwidth(vthin) clcolor(black) ||
scatter toplpctshare year if year>=1950 & year<=2013 &
country=="Italy", msymbol(i) msize(*1) mcolor(black)
connect(direct) clpattern(solid) clwidth(vthin) clcolor(black) ||
scatter toplpctshare year if year>=1950 & year<=2013 &
country=="Japan", msymbol(i) msize(*1) mcolor(black)
connect(direct) clpattern(solid) clwidth(vthin) clcolor(black) ||
scatter toplpctshare year if year>=1950 & year<=2013 &
country=="Korea", msymbol(i) msize(*1) mcolor(black)
connect(direct) clpattern(solid) clwidth(vthin) clcolor(black) ||
scatter toplpctshare year if year>=1950 & year<=2013 &
country=="Netherlands", msymbol(i) msize(*1) mcolor(black)
connect(direct) clpattern(solid) clwidth(vthin) clcolor(black) ||
scatter toplpctshare year if year>=1950 & year<=2013 &
country=="New Zealand", msymbol(i) msize(*1) mcolor(black)
connect(direct) clpattern(solid) clwidth(vthin) clcolor(black) ||
scatter toplpctshare year if year>=1950 & year<=2013 &
country=="Norway", msymbol(i) msize(*1) mcolor(black)
connect(direct) clpattern(solid) clwidth(vthin) clcolor(black) ||
scatter toplpctshare year if year>=1950 & year<=2013 &
country=="Portugal", msymbol(i) msize(*1) mcolor(black)
connect(direct) clpattern(solid) clwidth(vthin) clcolor(black) ||
scatter toplpctshare year if year>=1950 & year<=2013 &
country=="Spain", msymbol(i) msize(*1) mcolor(black)
connect(direct) clpattern(solid) clwidth(vthin) clcolor(black) ||
scatter toplpctshare year if year>=1950 & year<=2013 &
country=="Sweden", msymbol(i) msize(*1) mcolor(black)
connect(direct) clpattern(solid) clwidth(vthin) clcolor(black) ||
scatter toplpctshare year if year>=1950 & year<=2013 &
country=="Switzerland", msymbol(i) msize(*1) mcolor(black)
connect(direct) clpattern(solid) clwidth(vthin) clcolor(black) ||
scatter toplpctshare year if year>=1950 & year<=2013 &
country=="United Kingdom", msymbol(i) msize(*1) mcolor(black)
connect(direct) clpattern(solid) clwidth(vthin) clcolor(black) ||
scatter toplpctshare year if year>=1950 & year<=2013 &
country=="United States", msymbol(i) msize(*1) mcolor(black)
connect(direct) clpattern(solid) clwidth(thick) clcolor(black) ||
, scale(1.425) ysize(2.5) xsize(4) ytitle("", margin(0 0 0 0))
xtitle("Year", margin(0 0 0 2)) ylabel(0 "0 " 10 "10 " 20
"20%", angle(horizontal)) xlabel(1950 1980 2010)
plotregion(style(none)) graphregion(margin(l+12 r+28))
legend(off) text(19.34 2013.5 "US", placement(east) margin(0 0 0
0) justification(left) size(*.95)) text(12.4 2013 "Can, Kor, UK",
placement(east) margin(0 0 0 0) justification(left) size(*.7))
text(10.5 2013 "Ger, Ire, Swi", placement(east) margin(0 0 0 0)
justification(left) size(*.7)) text(9.5 2013 "It, Ja, Por",
placement(east) margin(0 0 0 0) justification(left) size(*.7))
text(8.5 2013 "Asl, Fr, Sp", placement(east) margin(0 0 0 0)
justification(left) size(*.7)) text(7.5 2013 "NZ, Nor, Swe",
placement(east) margin(0 0 0 0) justification(left) size(*.7))
```

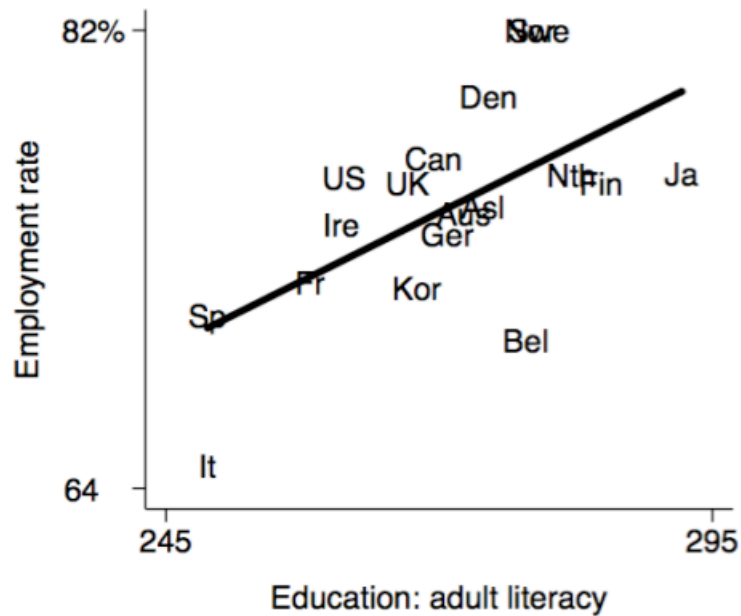
```
text(6.5 2013 "Nth, Den, Fin", placement(east) margin(0 0 0 0)  
justification(left) size(*.7))
```

Lane Kenworthy, "Happiness," *The Good Society*, figure 5



```
graph dot lifesatisfaction_0toll_2008, over(countryabbr,  
sort(lifesatisfaction_0toll_2008) descending axis(noline)) nofill  
scale(1.1) ysize(3.25) xsize(4) ytitle("", margin(0 0 0 0))  
ylabel(0 6 8) yscale(noline) plotregion(style(none) margin(b=0  
t=0)) graphregion(margin(l+15 r+25)) linetype(line)  
lines(lwidth(vthin)) legend(off) marker(1, msymbol(circle)  
mcolor(black) msize(1.6))
```

Lane Kenworthy, "What Good Is Education?," *The Good Society*, figure 5



```
scatter employmentrate_age25to64_2007 literacy_overallmean_2013,  
msymbol(i) msize(*1) mcolor(black) mlabel(countryabbr)  
mlabposition(0) mlabszsize(*1.25) || lfit  
employmentrate_age25to64_2007 literacy_overallmean_2013,  
connect(direct) clpattern(solid) clwidth(thick) clcolor(black) ||  
, scale(1.425) ysize(2.5) xsize(4) ytitle("Employment rate",  
margin(0 0 0 0)) xtitle("Education: adult literacy", margin(0 0 0  
2)) ylabel(64 "64 " 82 "82%", angle(horizontal)) xlabel(245  
295) plotregion(style(none)) graphregion(margin(l+11 r+32))  
legend(off)
```